



Safety Regulations

Visitors

KNMI Measuring Station Cabauw



*Work safe
=
Measure safe*



All people present at this KNMI measuring station must carry this instruction manual and must be informed of its content, before (further) entering this measuring location.





General rules of conduct for measuring location Cabauw:

1. Entering this measuring location is at your own risk. KNMI cannot be held responsible for any form of injury or damage, sustained inside or around the measuring location.
2. Wearing a helmet is obligatory for all people at the main tower measuring location. This helmet obligation applies within 50 metres around the measuring mast, inside the tower of the measuring mast and at the side platforms of the mast.
3. All people are obliged to sign in and out for every visit, using the visitors registration system.
4. Visitors must follow instructions from KNMI workers on location at all times.
5. All entry- and inside-doors of the measuring location must be closed at all times.
6. All fire extinguishers, emergency resources, (emergency-)exits, escape paths en stairs at the measuring location should be kept free for use at all times.
7. Vehicles may not be parked outside the indicated parking lots.
8. In order to enter the measuring mast, the following rules must be obeyed:
 - There must be at least one KNMI worker present on the ground.
 - The KNMI worker present must be informed before entering the tower of the measuring mast.
 - One must always carry a radiotelephone when entering the tower of the measuring mast.
 - Helmet obligation applies within the tower and at the side platforms.
 - The elevator cannot carry more than two people at once, up or down.
 - If the wind force exceeds 6 Beaufort, entering the side platforms of the measuring mast is prohibited.
 - Working inside the measuring mast is prohibited with an outside temperature above 26 degrees Celsius.
 - The custodian or KNMI worker(s) in charge maintain the right to prohibit entry of the measuring mast tower.

Safety at measuring location Cabauw:



Wearing a helmet at measuring location is obligatory



Open fire at measuring location is strictly prohibited



Exits are marked by this sign



Wearing safety shoes is recommended



Smoking at measuring location is strictly prohibited



Emergency exits are marked by this sign

Calamities at measuring location Cabauw:

- General phone numbers of emergency services and KNMI:
 - Fire Department / Ambulance / Police : 112
 - General Practitioner Lopik : +31 (0)348 – 55 21 89
 - KNMI De Bilt general : +31 (0)30 – 22 06 911
 - Custodian Cabauw : +31 (0)30- 22 06 437
- In case of an accident the following must always be mentioned: name, location of incident, what happened, number of people involved, gravity of the situation.
- KNMI must always be notified of incidents at the measuring location.
- In case of evacuation of the measuring location, all people present must gather at the *Meeting Point*, at the Zijdeweg entry gate of the measuring location (see vicinity map on right page).
- The order to evacuate can only be given by the custodian or KNMI worker(s) in charge at the measuring location.
- Addresses and other phone numbers can be found at the back of this instruction manual.

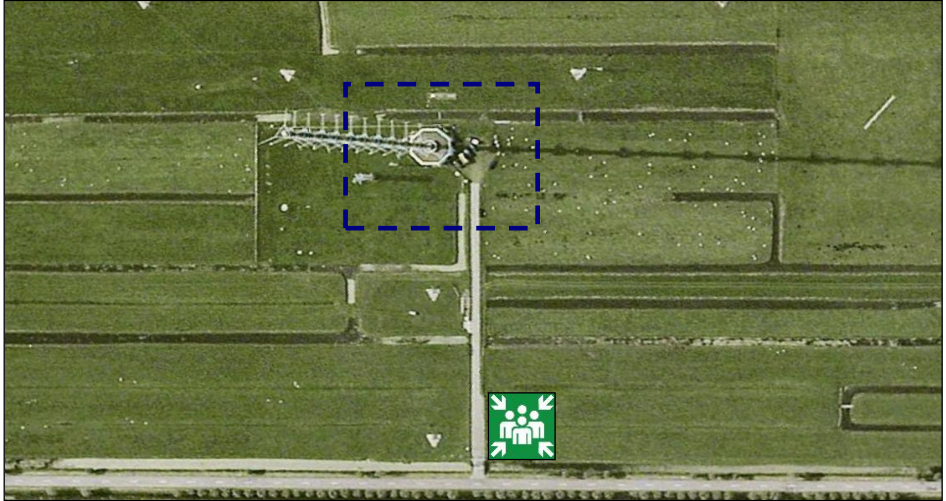


When leaving the measuring location because of an incident or evacuation, it is strictly prohibited to use the elevator.



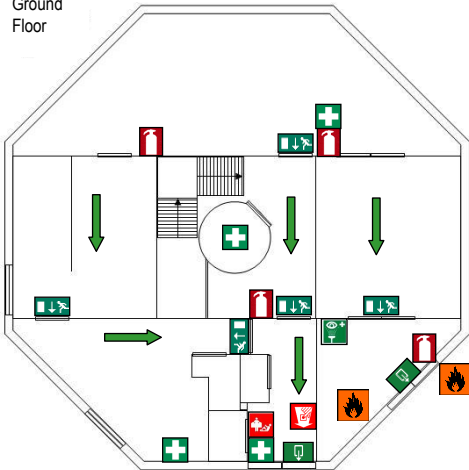


Vicinity map measuring location Cabauw:

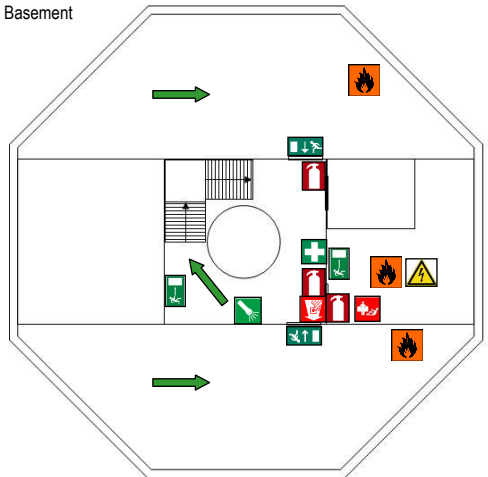


Evacuation plan measuring location Cabauw:

Ground Floor



Basement



Legend:

- | | | | |
|----------------------------------|-------------------|--------------------|--------------------------|
| Required helmet area | Exit | Advised escape | Meeting point Calamities |
| EMS resources | Emergency exit | Eye wash fountain | Flashlight |
| Automatic external defibrillator | Fire extinguisher | Smothering blanket | Fire detector |
| Danger: High voltage | | | |



Important addresses and phone numbers:

KNMI Measuring Station Cabauw
Zijdeweg 1
3411 MH Lopik
Phone: +31 (0)348 – 55 13 00
Custodian: +31 (0)30 – 22 06 437

Royal Netherlands Meteorological Institute (KNMI)
Utrechtseweg 297
3731 GA DE Bilt
Phone: +31 (0)30 – 22 06 911
Fax: +31 (0)30 – 22 10 407



General Practitioner Lopik
Het Veld 4
3411 ZS Lopik
Phone: +31 (0)348 – 55 21 89
Emergency: +31 (0)348 – 55 41 53

St. Antonius Hospital
Koekoekslaan 1
3435 CM Nieuwegein
Phone: +31 (0)30 – 60 99 111



Further information on KNMI and the measuring location can be found on the website: www.knmi.nl.

KNMI has drafted this instruction manual with great care and attention. Should you have any questions or remarks regarding this instruction manual, please contact the custodian of the measuring location, or the KNMI at De Bilt. Barring misprints. No part of this instruction manual may be reproduced or used in any other way without prior permission from KNMI.