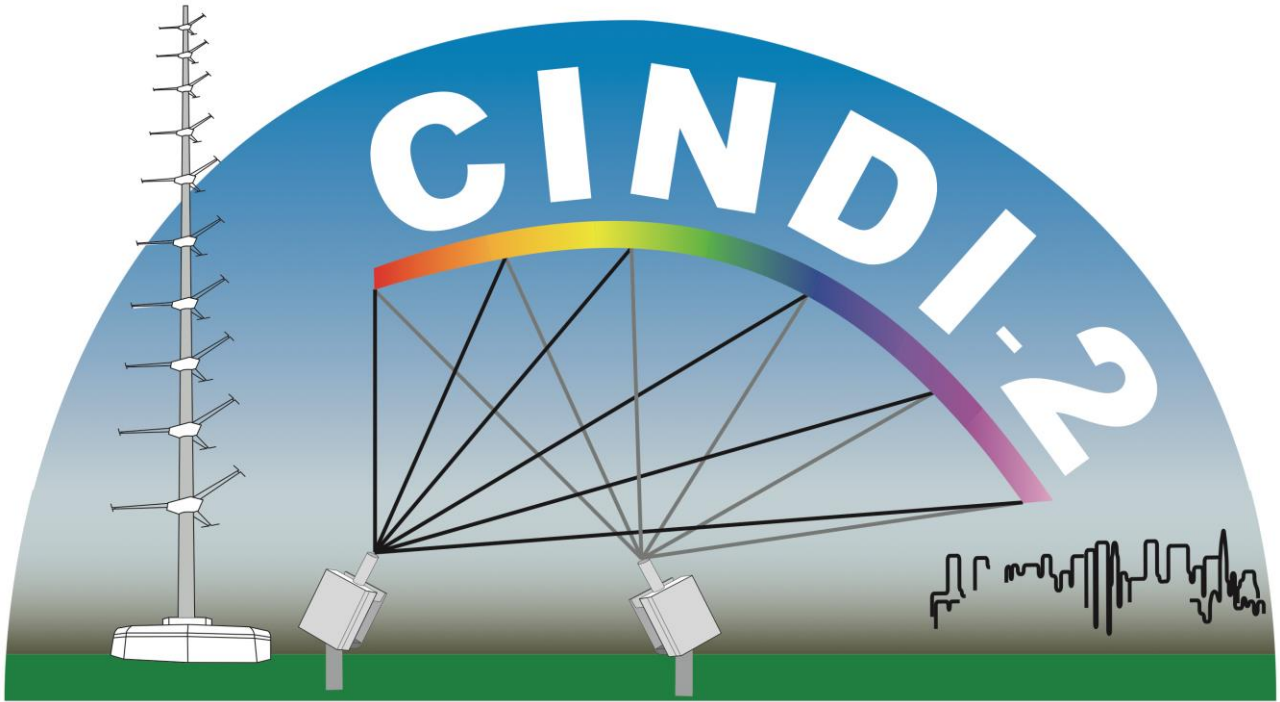


Welcome Package



<http://projects.knmi.nl/cindi-2>

September 2016

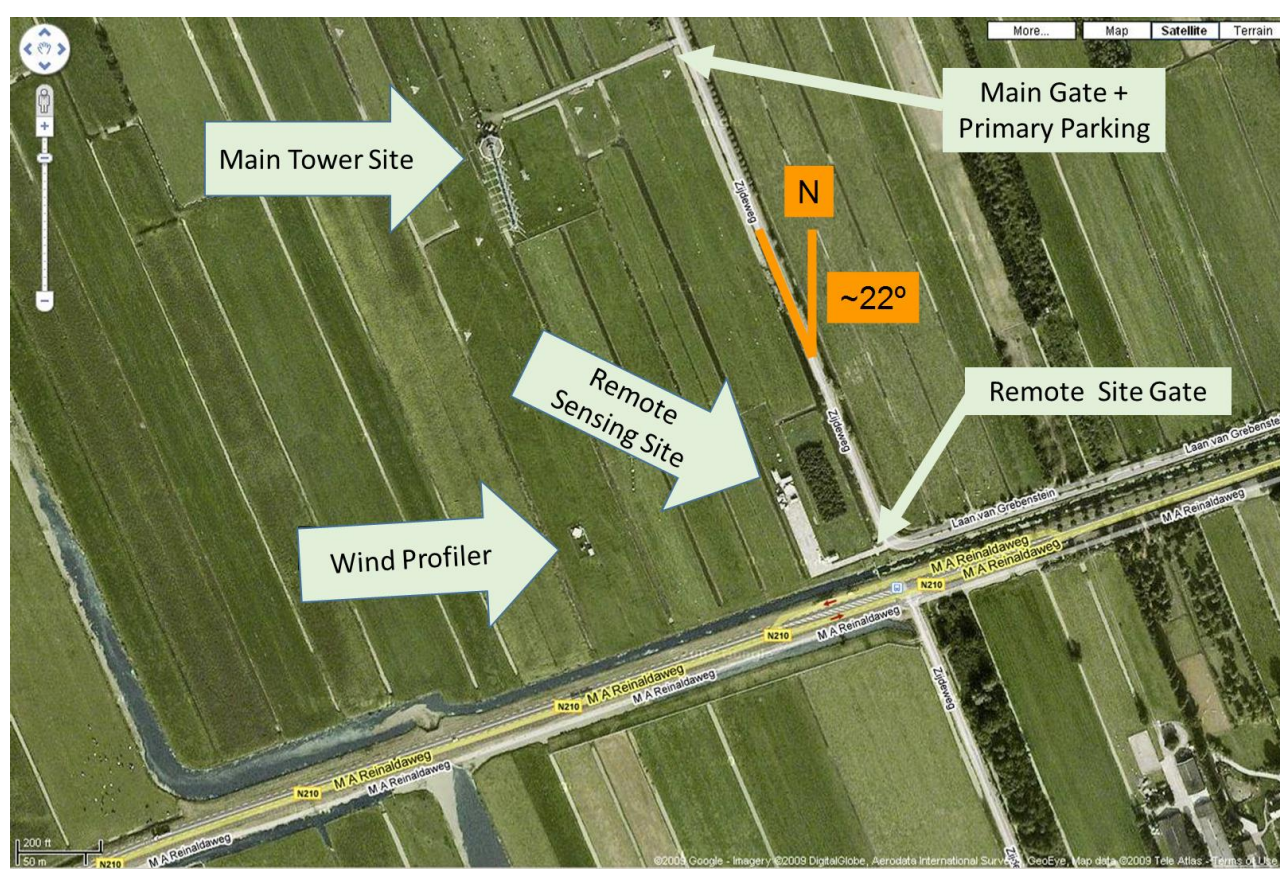
Welcome to Cabauw!

We are happy to welcome you as a fellow participant in the CINDI-2 campaign. You will find a wide range of practical information in this document including what you should bring, important safety regulations, and local links for accommodation and travel.

Site History

The Cabauw site has served as the experimental research site for KNMI since 1973. The 213 m tall meteorological mast is a noteworthy landmark on site. From May 2002 until now eight Dutch research institutes co-operate at CESAR (Cabauw Experimental Site for Atmospheric Research) to develop Cabauw into a major scientific international site for remote sensing, atmospheric research and climate monitoring. The Cabauw site has supported various campaigns in the past including Dandelions, ESA-CALIPSO, PEGASOS, and HD(CP)2. An overview map of the site including the various measurement locations is given below.

Deployment Site Map



Prior to Arrival

Prior to arrival make sure to provide your mobile phone number, email address, and anticipated time of arrival to both the site manager Marcel Brinkenberg and Arnoud Apituley (marcel.brinkenberg@knmi.nl; cindi-2@knmi.nl). Also, please make sure that you have read through this document, especially the "Safety and Site Regulations" and the "What You Should Bring" sections. Please check the CINDI-2 website (<http://projects.knmi.nl/cindi-2>) regularly for updates of this welcome package, campaign planning and schedules, important messages, and the most recent results. Please note that it is required to familiarize yourself with the safety instructions prior to arrival.

What You Should Bring to the Campaign Site

All necessary tools for your systems: Some tools are available at the Cabauw site for quick repairs. However, these are not meant to be used/claimed for the duration of the campaign.

All necessary power backup systems: Power backup systems (UPS) are very expensive to rent or buy. Please ensure that your instruments are field campaign proof and are outfitted with the appropriate power backup systems whenever they are in use. However it should be noted that power outages are occur very rarely at the site.

All necessary mechanical mountings: Concrete floor tiles with dimensions of 2 x 2 meters will be provided as mounting platforms. However, mounting your instruments is your responsibility so please ensure that you bring all necessary equipment and supplies.

Boots and sturdy shoes: It is strongly recommended to wear boots in the field during and after rainy weather as conditions can be quite muddy. Sturdy shoes are recommended at all other times to prevent ankle and knee injuries as the grassland is rather uneven.

Mobile phones and cameras: Mobile phones are essential for quick and efficient on site communication. Feel free to bring your cameras, because site photos are always a nice addition to the project!

Directions to the Site

Location: 51° 58.223' N, 4° 55.575' E
Address: Zijdweg 1, 3411 MH Lopik, The Netherlands.
Phone: +31 (0)348 551300

Google Maps link: <http://bit.ly/29wQVx6>

You can use the link above to calculate your route from your specific locations. In general you will first need to drive toward Utrecht, using the A2, A12, A27, or A28 depending on your location. Then continue to follow local instructions as determined by the directions from Google or your own route planner.

When You Arrive

Upon arrival make yourself known to the site manager Marcel Brinkenberg who is regularly present at the main tower. For his contact details see the Directory at the end of this document. You will receive a visitor's badge and folder with all safety regulations.

Site Access

Access to the main tower site is regulated by a badge-activated gate, which is likely to be open during regular hours and an intercom/call button is also present. Access to the remote sensing site is regulated by a gate using a key that is stored at the main tower site. One of the on-call scientists will ensure that the gate is unlocked during regular hours. As much as possible the key for the remote sensing should be kept at the main tower site. Thus once you have used it please return it. The full procedure for off hour access to the remote sensing site will be updated soon.

Parking

Parking at the remote site is only permitted for unloading of equipment. Parking at all other times is available at the main site just beyond the gate. It is the intention to provide bicycles at the site for easy local travel.

Summary of Safety and Site Regulations

The area outside immediately surrounding the tower is a hard hat area, please wear a hard hat whenever walking or working in this area. Hard hats are available near the main gate parking area and inside the main tower facility. For a full listing of all safety regulations at the site please refer to the folder given at the end of this document.

Be respectful of all instrumentation, equipment, and tools during the campaign. Do not touch or modify the equipment of other participants. Do not borrow tools unless given permission. Never leave 'live' power cables exposed without giving adequate notice and warning.

The neighboring grassland is owned by a local sheep farmer and uses the fields around the tower for grazing. Please respect these animals and report any problems to the site support.

Please keep our site clean, do not litter, and report any irregularities to site support.

Emergency and General Safety

Medical or Fire Emergency 112 (provide this address: Zijdeweg 1, Lopik; mention location at the 'Tower site' or the 'Remote Sensing Site')

Due to its remote location and fencing at the site it is a very safe location. Previous field campaigns have fortunately not reported any incidents. However, local police sometimes report issues with local youth, mostly during the weekend. Therefore we will take extra measures by having the site monitored overnight by a security company. You can help by making sure that loose equipment is stored out of sight in the porto cabins. When you leave the site at the end of the day, please take valuable items like personal laptops and mobile phones with you.

Phone Dialing Instructions

The country code for the Netherlands is '+31'. Dutch phone numbers start with a '0'.

Example phone number: +31 (0)30 2206418

To call this number within the Netherlands with a Dutch phone: dial 030 2206418

To call this number from abroad or with a foreign mobile phone: dial +31 302206418

In summary, all local area codes "030" become "+31 30" abroad. All local mobile area codes "06" become "+31 6" abroad. All phone numbers given in this document follow the format of the example phone number.

Site Support for Requests and Issues

During the campaign members of the organizing team will be present at the site on a roster basis. This roster will be posted at the campaign site, in the kitchen of the tower and inside the porto cabins. Please find below the appropriate mobile and landline phone numbers for site support and for submitting requests and reporting issues.

Mobile phone numbers for Site Support

Please note that this list will be updated prior to the campaign

| | |
|----------------------|-------------------|
| Arnoud Apituley | +31 (0)6 55457540 |
| Mirjam den Hoed | +31 (0)6 34211665 |
| Deborah Stein Zweers | +31 (0)6 33776988 |

Landlines

Please note that this list will be updated prior to the campaign

| | |
|----------------------|--------------------|
| Arnoud Apituley | +31 (0)30 2206 418 |
| Mirjam den Hoed | +31 (0)30 2206 259 |
| Deborah Stein Zweers | +31 (0)30 2206 407 |
| Ankie Piters | +31 (0)30 2206 433 |

Public transportation

Door-to-door public transport planner (9292)

<http://9292.nl/en#> Use the nearby bus stop (bushalte) as a starting point: Vrijheidslaan, Lopik.

Dutch rail system (NS): <http://www.ns.nl/en>

Information about public transport cards needed for using Dutch buses, metro, trains, etc:

<https://www.ov-chipkaart.nl/apply-1/which-card-is-right-for-you/tourists.htm>

Useful Links

| | |
|--|---|
| KNMI | www.knmi.nl |
| Cesar - Cabauw Site | http://www.cesar-observatory.nl/ |
| Google Maps Netherlands | http://maps.google.nl/ |
| Radar loops and forecasts | http://www.buienradar.nl/ |
| Air quality maps and forecasts: NO ₂ , PM, O ₃ | https://www.luchtmeetnet.nl/kaart |
| Schiphol Airport | http://www.schiphol.nl/ |
| Utrecht City site | https://www.utrecht.nl/city-of-utrecht/ |
| Dutch government site including visa info | https://www.government.nl/ |
| Dutch tourism site | http://www.holland.com/global/tourism.htm |

Extra Information for the Netherlands

Electrical power 220V–230V @ 50 Hz

Traffic Rules

<http://www.holland.com/global/tourism/article/travelling-by-car-in-holland.htm>

Accommodation

In the table below you can access the website of a specific Hotel or B&B by hovering over and CTRL+clicking on the name. You are responsible for your accommodation arrangements. If you have specific questions we are happy to assist.

Also consider using 'AirBnB' by searching in the vicinity of Lopik for local homes including some that are available for longer term rental:

<https://www.airbnb.com/s/Lopik--Netherlands>

| Hotel | Name | Address | Contact Information |
|----------------|---------------------------------|---|--|
| 1 | Belvedere | Lekdijk West 4 2871 MK Schoonhoven | Phone: +31 (0)182 325222 E-mail: info@hotelbelvedere.nl |
| 2 | Abrona | Broeckerstraat 20 3421 BL Oudewater | Phone: +31 (0)348 567466 E-mail: hotel.abrona@abrona.nl |
| 3 | Hampshire Hotel | Molenlaan 14 2861 LB Bergambacht | Phone: +31 (0)35 6777217 E-mail: via Contact Form on Web |
| 4 | Logies Oude Haven | Oude Haven 19 2871 DG Schoonhoven | Phone: +31 (0)6 44024702 E-mail: ra.melieste@hetnet.nl Web: http://www.logiesoudehaven.nl/ |
| B&B | | | |
| 1 | Roosenburg | Tiendweg 1A 2871 AA Schoonhoven | Phone: +31 (0)182 381340 Mobile: +31 (0)6 28830009 E-mail: yvonne.mulder@ziggo.nl |

| | | | |
|---|---------------------------------|--|--|
| 2 | Villa Voorncamp | Lopikerweg 48B 2871 AV Schoonhoven | Phone: +31 (0)182 385794 Mobile: +31 (0)6 55174596 E-mail: via Contact form on website |
| 3 | De Hooizolder | Bovenberg 126 2861 BD Bergambacht | Phone: +31 (0)182 380624 E-mail: rvanzwienen@hotmail.com |

Supermarkets

Plus Van Velzen

President Kennedylaan 2A

3411 BR Lopik

https://www.plus.nl/supermarkten/lopi_plus-van-velzen_490

This is a large, recently renovated supermarket.

Opening Hours

Mon – Thurs: 8:00-20:00

Friday: 8:00-21:00

Saturday: 7:00-20:00

Sunday: closed

Albert Heijn

Cellebroedersstraat 1

2871 AS Schoonhoven

There are many small supermarkets nearby including these chain stores: Spar, Emte, and Plus.

Opening Hours

Mon – Thurs: 8:00-20:00

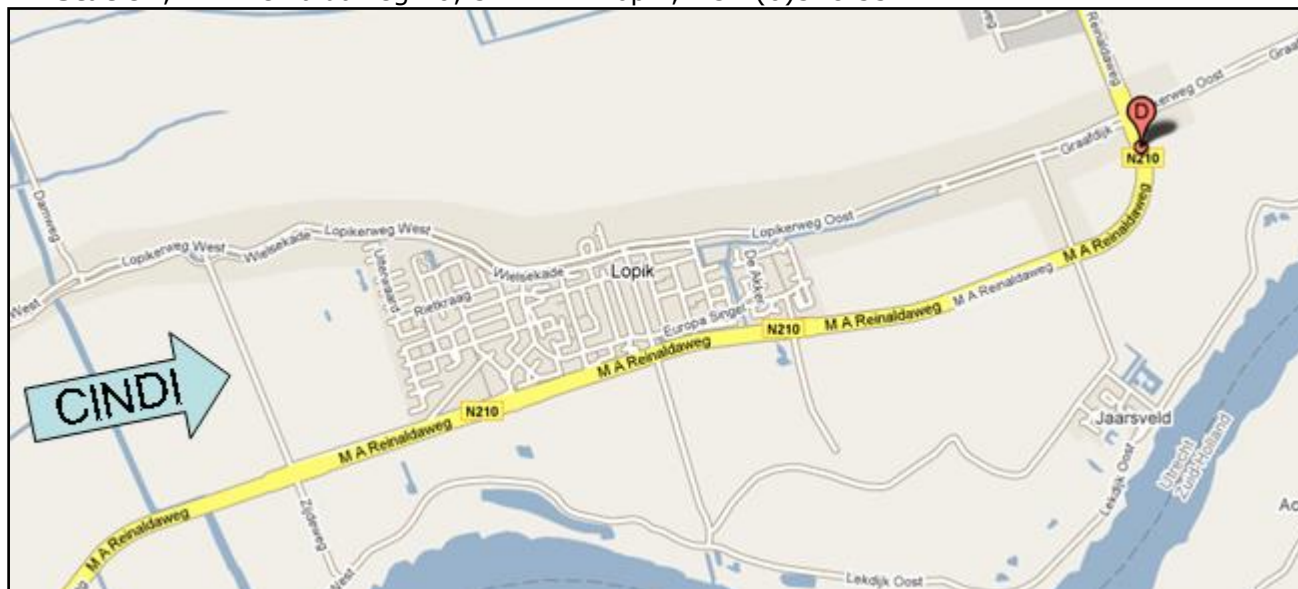
Friday: 8:00-21:00

Saturday: 7:00-20:00

Sunday: closed

Nearest Gas Station

BP Station, M A Reinaldaweg 10, 3411 MB Lopik, +31 (0)348 554144.



Other gas stations nearby:

Avia gas station, Broeikweg 3, 2871 RN Schoonhoven

Shell gas station, C.G. Roosweg 4, 2871 MA Schoonhoven

Hardware Stores / Bouwmarkten

Proline Bouwmarkt

Churchilllaan 19,

3411 CE Lopik

<http://www.prolinebouwmarkt.nl/>

Opening Hours

Monday: 13:00 – 18:00

Tues - Thurs: 9:00 – 18:00

Friday: 9:00 – 20:00

Saturday: 9:00 – 17:00

Sunday: Closed

KlusWijs,

De Diamant 2,
2872 ZZ Schoonhoven

<https://www.kluswijs.nl/winkels/schoonhoven/>

Opening Hours

Mon – Thurs: 8:00 – 19:00

Friday: 8:00 – 21:00

Saturday: 8:00 – 17:00

Sunday: Closed

Other hardware chain stores include: Hubo, Gamma, Praxis, Karwei, Hornbach

Directory / Face Book

Arnoud Apituley
T: +31(0)30 2206 418
Mobile: +31 (0)6 55457540
E: apituley@knmi.nl



Deborah Stein Zweers
T: +31(0)30 2206 407
Mobile: +31 (0)6 33776988
E: stein@knmi.nl



Marcel Brinkenberg
T: +31(0)30 2206 437
Mobile: +31(0)6 46246895
E: marcel.brinkenberg@knmi.nl



Mirjam den Hoed
T: +31(0)30 2206 259
Mobile: +31 (0)6 34211665
E: hoed@knmi.nl



Irene Das
T: +31(0)30 2206 493
E: das@knmi.nl



Ankie Pitors
T: +31(0)30 2206 433
E: pitors@knmi.nl

Safety Regulations

Visitors

KNMI Measuring Station Cabauw



*Work safe
=
Measure safe*



All people present at this KNMI measuring station must carry this instruction manual and must be informed of its content, before (further) entering this measuring location.



General rules of conduct for measuring location Cabauw:

1. Entering this measuring location is at your own risk. KNMI cannot be held responsible for any form of injury or damage, sustained inside or around the measuring location.
2. Wearing a helmet is obligatory for all people at the main tower measuring location. This helmet obligation applies within 50 metres around the measuring mast, inside the tower of the measuring mast and at the side platforms of the mast.
3. All people are obliged to sign in and out for every visit, using the visitors registration system.
4. Visitors must follow instructions from KNMI workers on location at all times.
5. All entry- and inside-doors of the measuring location must be closed at all times.
6. All fire extinguishers, emergency resources, (emergency-)exits, escape paths en stairs at the measuring location should be kept free for use at all times.
7. Vehicles may not be parked outside the indicated parking lots.
8. In order to enter the measuring mast, the following rules must be obeyed:
 - There must be at least one KNMI worker present on the ground.
 - The KNMI worker present must be informed before entering the tower of the measuring mast.
 - One must always carry a radiotelephone when entering the tower of the measuring mast.
 - Helmet obligation applies within the tower and at the side platforms.
 - The elevator cannot carry more than two people at once, up or down.
 - If the wind force exceeds 6 Beaufort, entering the side platforms of the measuring mast is prohibited.
 - Working inside the measuring mast is prohibited with an outside temperature above 26 degrees Celsius.
 - The custodian or KNMI worker(s) in charge maintain the right to prohibit entry of the measuring mast tower.

Safety at measuring location Cabauw:



Wearing a helmet at measuring location is obligatory



Open fire at measuring location is strictly prohibited



Exits are marked by this sign



Wearing safety shoes is recommended



Smoking at measuring location is strictly prohibited



Emergency exits are marked by this sign

Calamities at measuring location Cabauw:

- General phone numbers of emergency services and KNMI:
 - Fire Department / Ambulance / Police : 112
 - General Practitioner Lopik : +31 (0)348 – 55 21 89
 - KNMI De Bilt general : +31 (0)30 – 22 06 911
 - Custodian Cabauw : +31 (0)30- 22 06 437
- In case of an accident the following must always be mentioned: name, location of incident, what happened, number of people involved, gravity of the situation.
- KNMI must always be notified of incidents at the measuring location.
- In case of evacuation of the measuring location, all people present must gather at the *Meeting Point*, at the Zijdweg entry gate of the measuring location (see vicinity map on right page).
- The order to evacuate can only be given by the custodian or KNMI worker(s) in charge at the measuring location.
- Addresses and other phone numbers can be found at the back of this instruction manual.



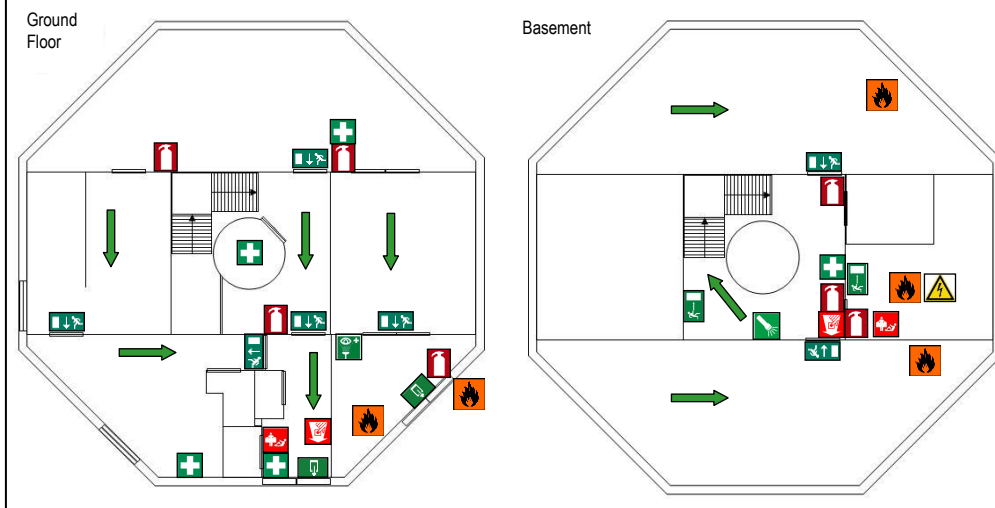
When leaving the measuring location because of an incident or evacuation, it is strictly prohibited to use the elevator.



Vicinity map measuring location Cabauw:



Evacuation plan measuring location Cabauw:



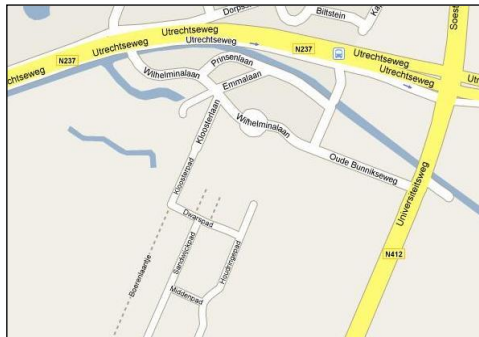
Legend:

| | | | | | | | |
|--|----------------------------------|--|-------------------|--|--------------------|--|--------------------------|
| | Required helmet area | | Exit | | Advised escape | | Meeting point Calamities |
| | EMS resources | | Emergency exit | | Eye wash fountain | | Flashlight |
| | Automatic external defibrillator | | Fire extinguisher | | Smothering blanket | | Fire detector |
| | Danger: High voltage | | | | | | |

Important addresses and phone numbers:

KNMI Measuring Station Cabauw
Zijdweg 1
3411 MH Lopik
Phone: +31 (0)348 – 55 13 00
Custodian: +31 (0)30 – 22 06 437

Royal Netherlands Meteorological Institute (KNMI)
Utrechtseweg 297
3731 GA DE Bilt
Phone: +31 (0)30 – 22 06 911
Fax: +31 (0)30 – 22 10 407



General Practitioner Lopik
Het Veld 4
3411 ZS Lopik
Phone: +31 (0)348 – 55 21 89
Emergency: +31 (0)348 – 55 41 53

St. Antonius Hospital
Koekoekslaan 1
3435 CM Nieuwegein
Phone: +31 (0)30 – 60 99 111



Further information on KNMI and the measuring location can be found on the website: www.knmi.nl.

KNMI has drafted this instruction manual with great care and attention. Should you have any questions or remarks regarding this instruction manual, please contact the custodian of the measuring location, or the KNMI at De Bilt. Barring misprints. No part of this instruction manual may be reproduced or used in any other way without prior permission from KNMI.

© Copyright KNMI 2015 (Version 1.1 May 2015)